

	PETROL 95 ULP	PETROL 93 ULP & LRP	DIESEL 0.05%	DIESEL 0.005%	ILL. PAR.
GAUTENG PUMP PRICE (SA c/l) AS FROM 02/12/2020	1,446.000	1,426.000	-	-	-
WHOLESALE PRICE (SA c/l) AS FROM 02/12/2020	-	-	1,245.420	1,247.820	684.688
SINGLE NATIONAL MAXIMUM RETAIL PRICE	-	-	-	-	856.000
BASIC FUEL PRICE - 30/11/2020 (SA c/l)	508.429	501.097	528.712	529.775	511.947
PRESS RELEASE CONTRIBUTION TO BFP 27/11/2020 - 30/11/2020 (SA c/l)	506.470	496.470	474.630	477.030	451.128
UNIT OVER/(UNDER) RECOVERY - 30/11/2020 (SA c/l)	(1.959)	(4.627)	(54.082)	(52.745)	(60.819)
AVERAGE BASIC FUEL PRICE 27/11/2020 - 30/11/2020	510.525	503.002	527.896	528.917	510.682
AVERAGE UNIT OVER/(UNDER) RECOVERY 27/11/2020 - 30/11/2020	(4.055)	(6.532)	(53.266)	(51.887)	(59.554)

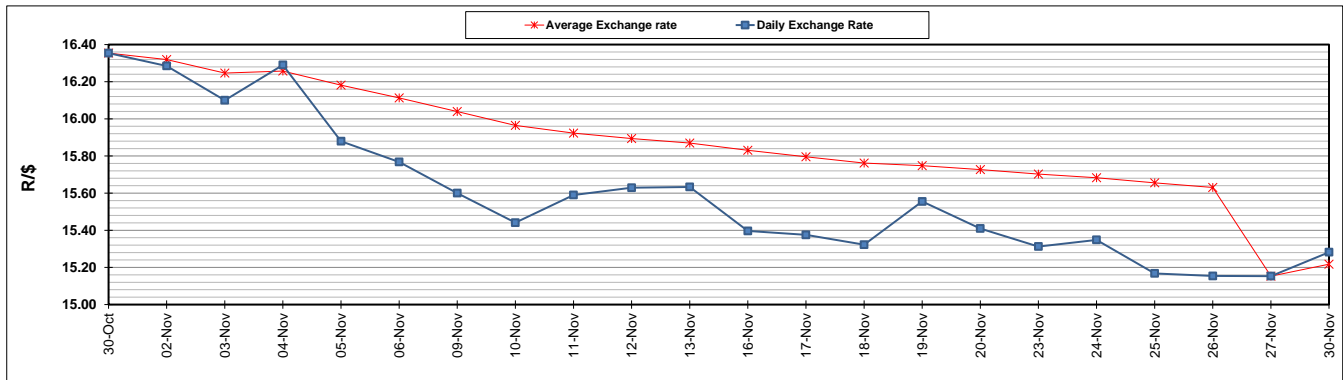
### ANALYSIS MOVEMENT OF AVERAGE OVER/(UNDER) RECOVERY

- MOVEMENT IN INTERNATIONAL PRODUCT PRICES
- MOVEMENT IN EXCHANGE RATE
- AVERAGE UNIT OVER/(UNDER) RECOVERY 27/11/2020 - 30/11/2020

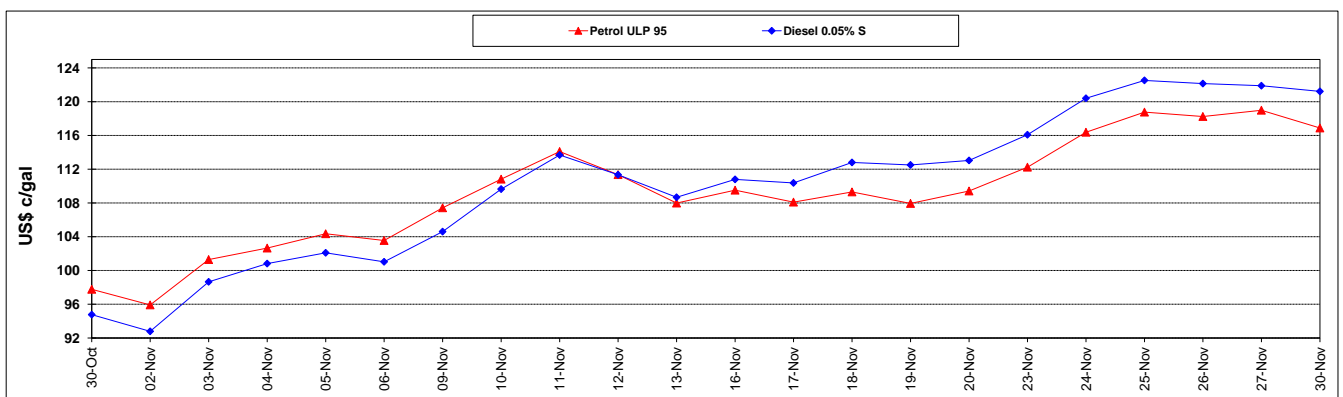
	PETROL 95	PETROL 93	DIESEL 0.05%	DIESEL 0.005%	ILL. PAR.
	(17.914)	(20.187)	(67.597)	(66.245)	(73.417)
	13.859	13.655	14.331	14.358	13.863
	(4.055)	(6.532)	(53.266)	(51.887)	(59.554)

### R/\$ EXCHANGE RATE - (R/\$15.2818 - 30/11/2020)

#### EXCHANGE RATE USED IN BASIC FUEL PRICE



#### INTERNATIONAL PRODUCT PRICES OF BASKET USED IN BASIC FUEL PRICE



#### BASIC FUEL PRICE IN SA CENTS PER LITRE

